

Customer :

customer

Customer part :

customer part

Comment :

Comment

S1=0.02

S2=0.14

Tmax=443

Tp S2=482.0

PI=0.12

HI=33

Sample =4617.34

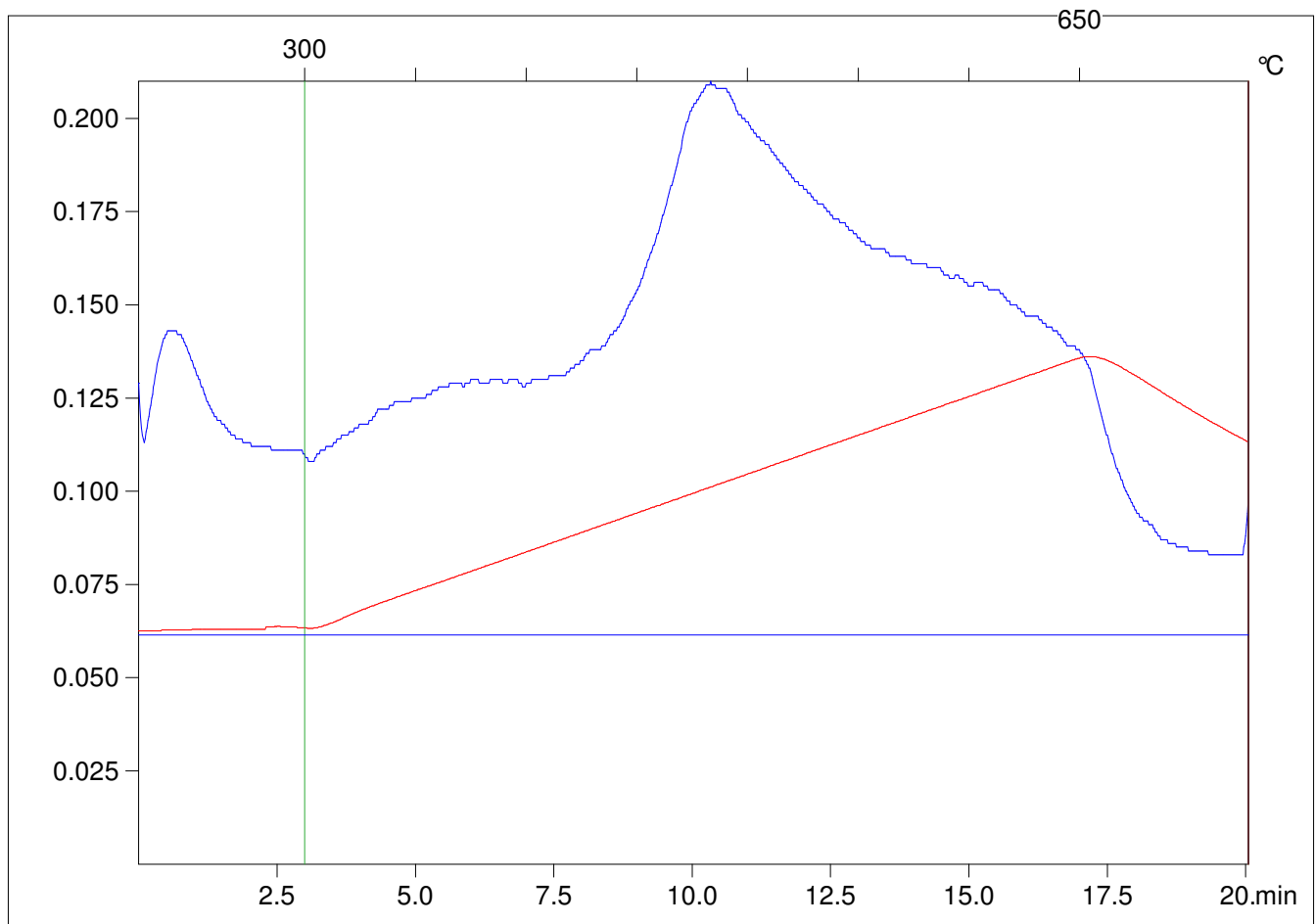
Method =Bulk Rock

Cycle=Basic

KFID(10*9)=1167

Qty =70.8

TOC=0.43



C:\VINC\PK141021\PK027.R00 : FID pyrolysis graphic

State

Pyro Status

Oxi Status